

# Watchlog Wireless Signal Gateways

A range of signal converting gateway modules that receive Watchlog wireless signals and convert to standard analogue signals, relays, alarms & serial Modbus or ASCII data.



Order codes / Description

Module size (H x W x L):

Wireless Range:

Power supply:

Antenna:

Radio frequency:

Transmit power:

Interface:

Operating temperature:

Storage temperature:

Environmental Protection:

Software & Configurations:

USPs:



## HT-AOI/AOIi

Wireless Analogue Output Gateway

25 x 88 x 146 mm / 57 x 84 x 164 mm

100 m / 800m

9-32Vdc  
(100mA typical)

HT-ANTA (inside enclosure)

2.4 GHz

10 mW

4-20mA, 0-20mA, 0-5V, 0-10V outputs

-20 °C to +55 °C

-40 °C to +85 °C

IP50 / IP67 / Nema4 (95% non-condensing max humidity level)

Programmed using free Toolkit configuration software

- Receive Data from just 1 transmitter
- Two choices of enclosure
- Wide range of analogue output signal options



## HT-RMI

Wireless Relay Output Gateway

57 x 84 x 164 mm

500 m

9-32Vdc  
(150mA typical)

HT-ANTA (inside enclosure)

2.4 GHz

10 mW

x2 Power relays, x1 Alarm relay outputs

-20 °C to +55 °C

-40 °C to +85 °C

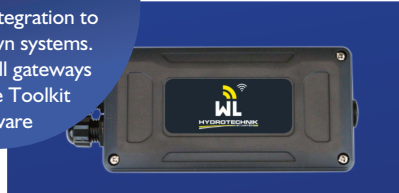
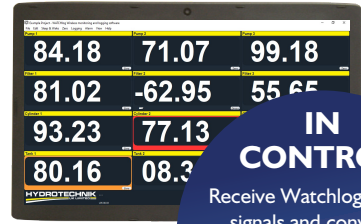
IP67 / Nema4 (95% non-condensing max humidity level)

Programmed using free Toolkit configuration software

- Receive data from up to 16 transmitters
- 2 relays, mains rated
- Provides limit switching

### IN CONTROL:

Receive Watchlog wireless signals and convert to signals for integration to your own systems. Configure all gateways using free Toolkit software



## HT-SO

Wireless Relay Output Gateway

57 x 84 x 164 mm

800 m

9-32Vdc  
(100mA typical)

HT-ANTA (inside enclosure)

2.4 GHz

10 mW

ASCII (RS232 + RS485) outputs

-20 °C to +55 °C

-40 °C to +85 °C

IP67 / Nema4 (95% non-condensing max humidity level)

Programmed using free Toolkit configuration software

- Receive data from up to 8 transmitters
- Serial outputs for printers, displays, PC's or PLC's



## HT-GWI

Wireless ASCII Serial Output Gateway

57 x 84 x 164 mm

800 m

9-32Vdc  
(100mA typical)

HT-ANTA (inside enclosure)

2.4 GHz

10 mW

Modbus RTD or ASCII (RS232 + RS485)

-20 °C to +55 °C

-40 °C to +85 °C

IP67 / Nema4 (95% non-condensing max humidity level)

Programmed using free Toolkit configuration software

- Receive data from up to 60 transmitters
- Interface for industrial PLC's and for connection to existing DAQ systems (e.g LabView)